



# Series X538 SOJ J-lead Surface Mount Sockets

## FEATURES:

- Allows SOJ packaged devices to be socketed for easy removal.
- Open body for easy surface mount solder joint inspection.

## SPECIFICATIONS:

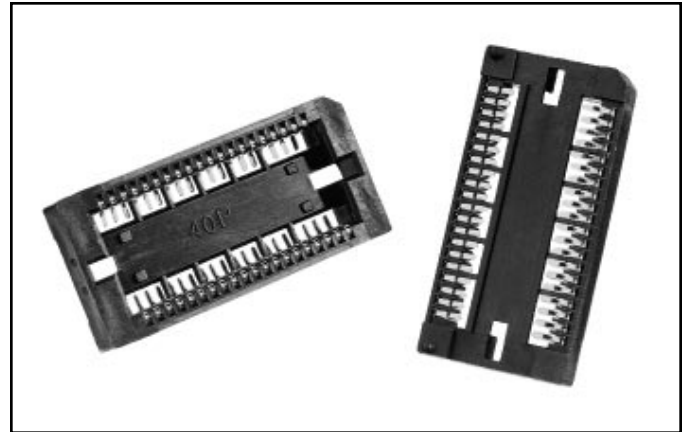
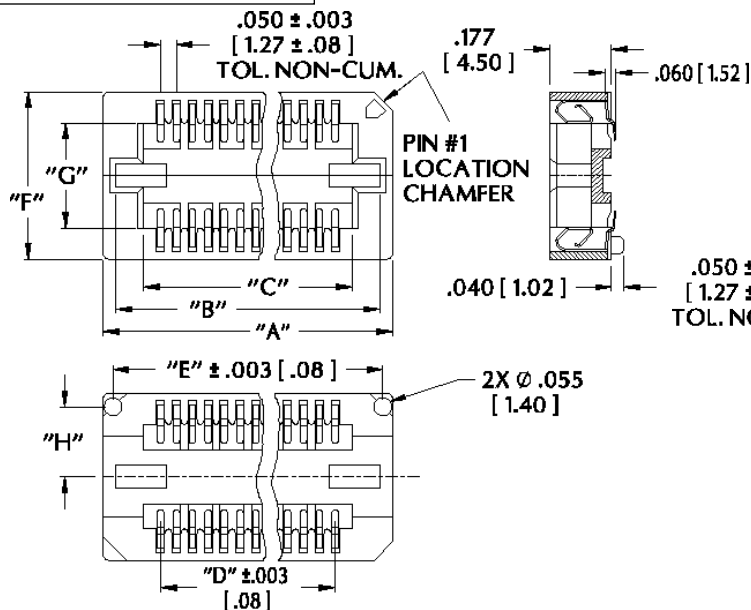
- Body is brown UL 94V-0 glass-filled Thermoplastic (PPS).
- Contacts are Phosphor Bronze.
- Contact plating is 100µ [2.54µm] min. Tin over 35µ [89µm] Nickel.
- Contact current rating=1 Amp.
- Contact resistance=30 mOhms.
- Operating temperature=-67°F to 221°F [-55°C to 105°C].
- Insulation resistance=1000 MOhms min. @ 500 VDC.
- Withstanding voltage=500 VAC for 1 minute.
- Max. processing temperature=446°F [230°C] for 30 sec.
- Insertion force=120 grams/contact average.

## MOUNTING CONSIDERATIONS:

- See suggested PCB layout below.

**ALL DIMENSIONS: INCHES [MILLIMETERS]**

All tolerances ± .005 [.13]  
unless otherwise specified

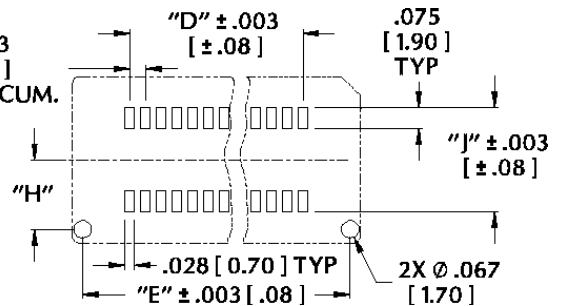


Note: Aries specializes in custom design and production. In addition to the standard products shown on this page, special materials, platings, sizes, and configurations can be furnished, depending on quantities. Aries reserves the right to change product specifications without notice.

## ORDERING INFORMATION

See table for  
part numbers

## SUGGESTED PCB LAYOUT (top view)



Part No.	Dim. "A"	Dim. "B"	Dim. "C"	Dim. "D"	Dim. "E"	Dim. "F"	Centers "G"	Dim. "H"	Dim. "J"
24-S538-00	.916 [23.26]	.852 [21.64]	.644 [16.36]	.550 [13.97]	.800 [20.32]	.546 [13.87]	.326 [8.27]	.210 [5.33]	.330 [8.38]
26-S538-00	.966 [24.53]	.902 [22.91]	.694 [17.63]	.600 [15.24]	.850 [21.59]	.546 [13.87]	.326 [8.27]	.210 [5.33]	.330 [8.38]
28-S538-00	1.016 [25.80]	.952 [24.18]	.744 [18.90]	.650 [16.51]	.900 [22.86]	.546 [13.87]	.326 [8.27]	.210 [5.33]	.330 [8.38]
28-L538-00	1.015 [25.78]	.952 [24.18]	.743 [18.88]	.650 [16.51]	.902 [22.90]	.646 [16.40]	.425 [10.80]	.260 [6.60]	.432 [10.97]
32-S538-00	1.116 [28.26]	1.052 [26.72]	.844 [21.44]	.750 [19.05]	1.052 [26.72]	.546 [13.87]	.326 [8.27]	.210 [5.33]	.330 [8.38]
32-L538-00	1.115 [28.32]	1.052 [26.72]	.843 [21.43]	.750 [19.05]	1.002 [25.44]	.646 [16.40]	.425 [10.80]	.260 [6.60]	.432 [10.97]
40-L538-00	1.315 [33.40]	1.252 [31.80]	1.043 [26.26]	.950 [24.13]	1.200 [30.48]	.646 [16.40]	.425 [10.80]	.260 [6.60]	.432 [10.97]