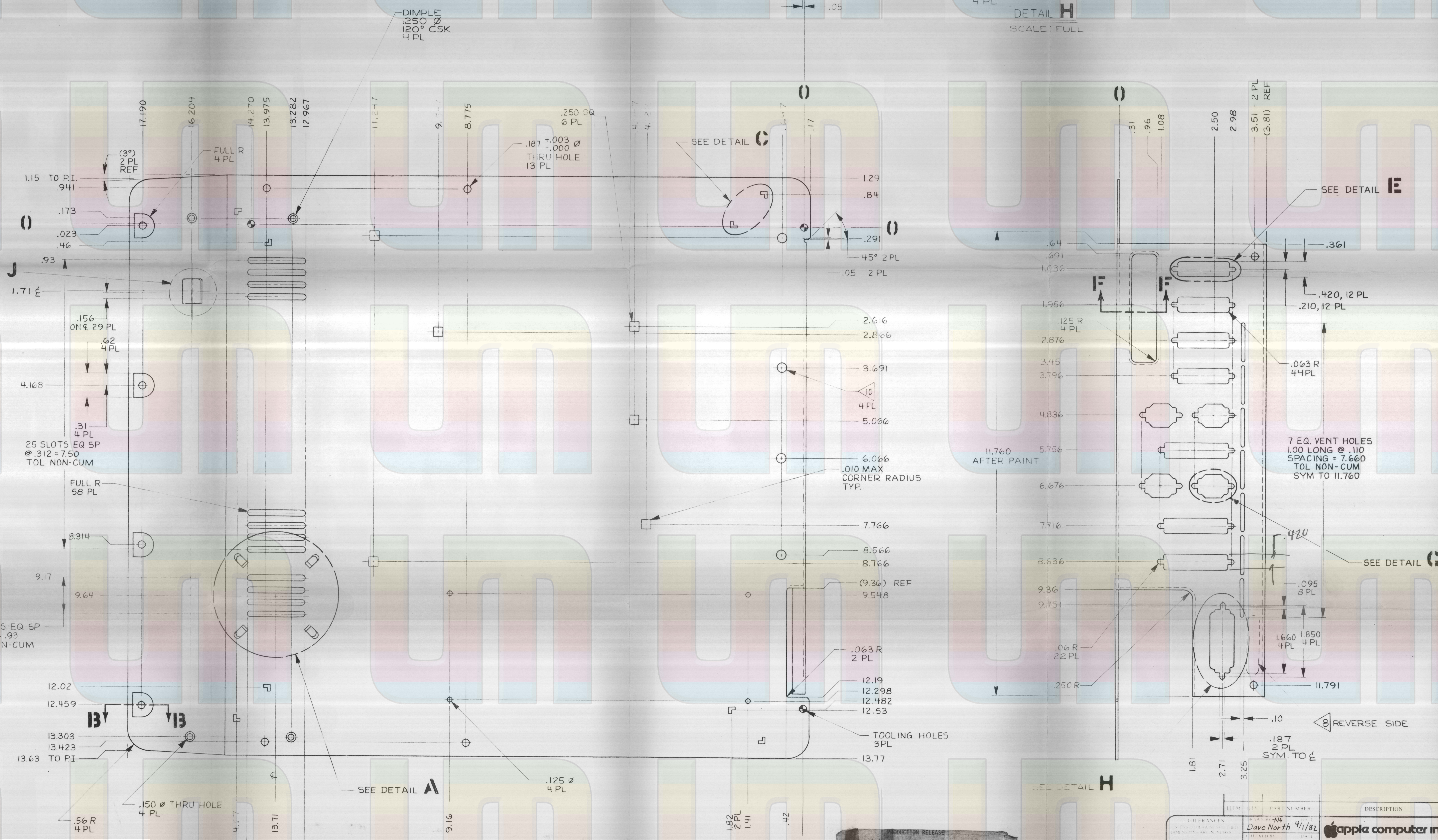
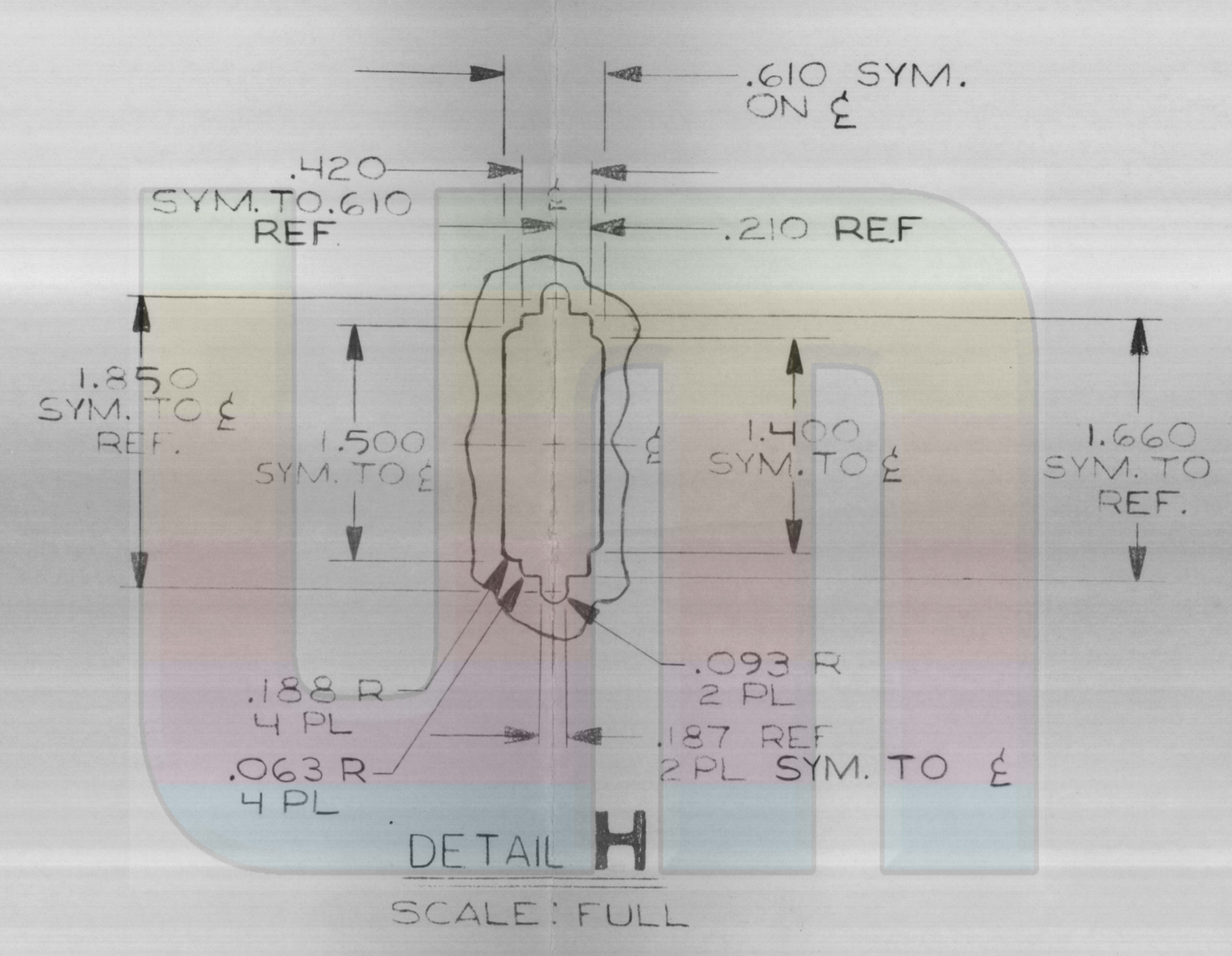
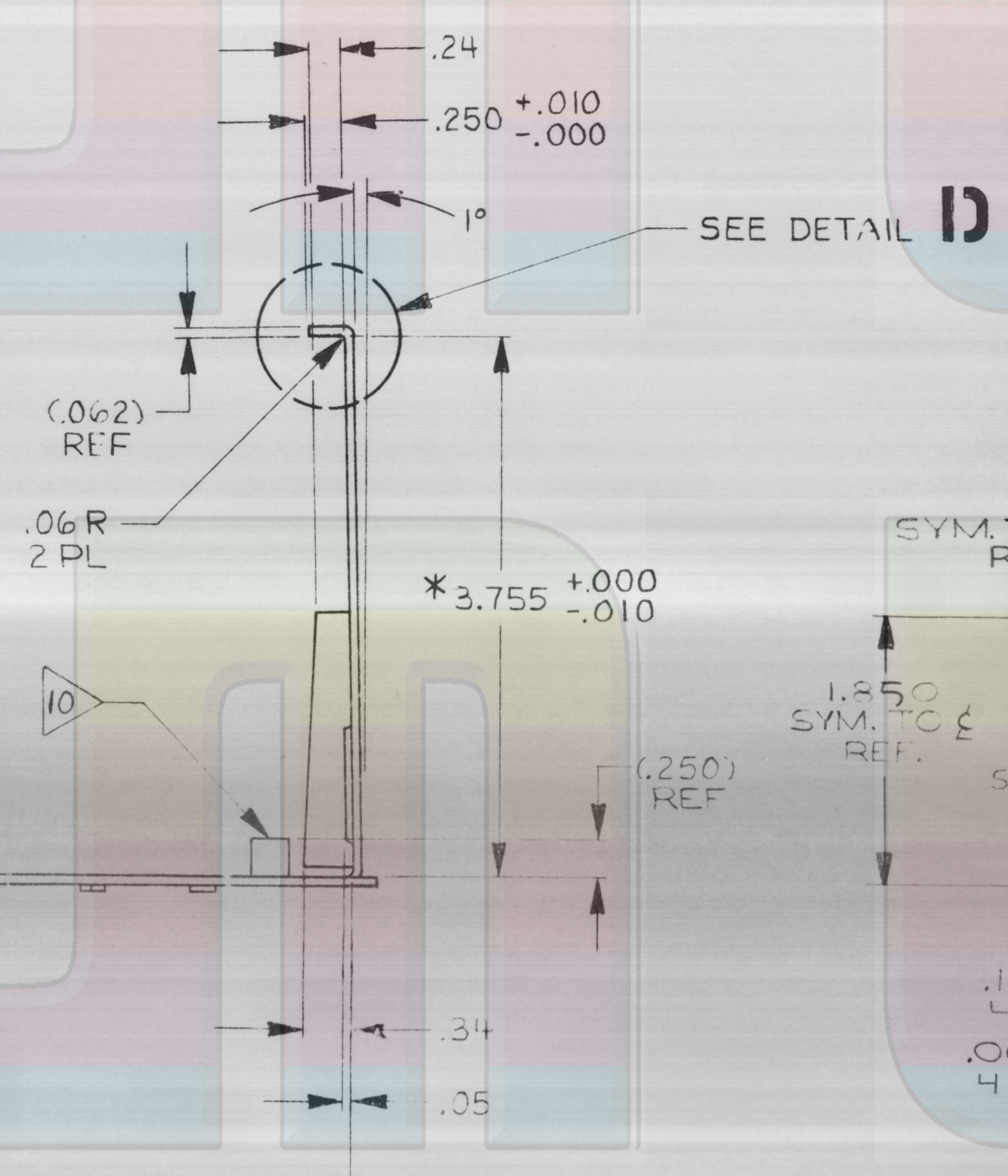
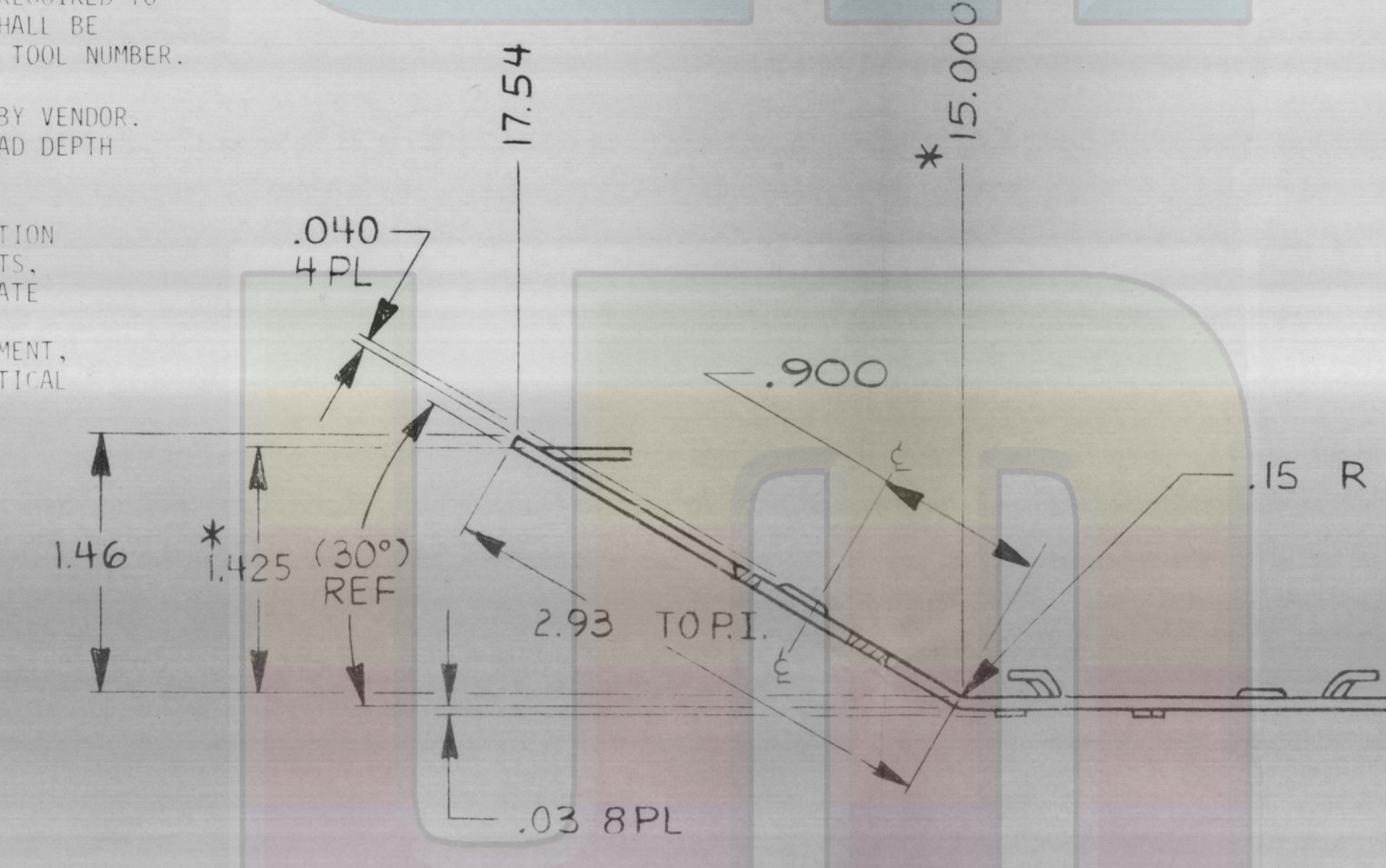


NOTE: UNLESS OTHERWISE SPECIFIED

- MATERIAL: ALUMINUM 6061-T3 .062 THICK.
- ALL UNDIMENSIONED RIGHT ANGLE BENDS TO BE 90 ± 30°.
- ALL INSIDE BEND RADI TO BE .06 MAX.
- REMOVE ALL BURRS AND SHARP EDGES.
- ALL SHARP CORNERS TO BE BROKEN .03 X 45 DEGREES.
- STRAIGHT EDGES TO HAVE STRAIGHTNESS TOLERANCE OF .003 PER INCH NOT TO EXCEED .015 OVER ENTIRE LENGTH.
- FLAT SURFACES TO HAVE FLATNESS TOLERANCE OF .008 PER INCH NOT TO EXCEED .025 OVER ENTIRE SURFACE.
- MARK APPLE PART NUMBER AND REVISION LETTER WITH .125 MINIMUM HIGH CHARACTERS APPROXIMATELY WHERE INDICATED. (805-0556 AT CURRENT REV LEVEL).
- STEEL RULE DIES, SPECIAL PINCHES, OR OTHER UNIQUE TOOLING REQUIRED TO MAKE THIS PART TO BE PROPERTY OF APPLE COMPUTER, INC. AND SHALL BE PERMANENTLY MARKED WITH APPLE'S NAME AND APPROPRIATE APPLE TOOL NUMBER.
- ALUMINUM PER NUMBER B50A-632-10 OR EQUIV. TO BE INSTALLED BY VENDOR. MIN. TORQUE-OUT FOR STAND-OFF TO BE 20 IN. LBS. MIN. THREAD DEPTH TO BE .156.
- DIMENSIONS SHOWN APPLY TO FINISHED PART REQUIREMENTS. LOCATION AND POSITION TOLERANCES OF ± .005 FOR HOLES, SURFACES, SLOTS, EDGES, BEND ORIGINS, ETC. THAT ARE LOCATED IN PLANES SEPARATE FROM THAT DEFINED BY TOOLING HOLES. DESIGNATION APPLY TO THESE FEATURES ONLY DURING FLAT (UNWENT) PATTERN DEVELOPMENT, BEFORE FORMING, WITH .062 NOMINAL MATERIAL THICKNESS. CRITICAL DIMENSIONS AFTER FORMING ARE INDICATED BY *.
- CRITICAL EDGES MUST HAVE BURRS AND SHARP EDGES REMOVED.

REV	ZONE	ECO#	REVISION	APPR
A	A213		INITIAL RELEASE	
B	A3 B2	A310	WAS .600 SYM. ON .900 WAS .500 SYM. ON 1.71 ON SHEET 2	



BROUGHT TO YOU BY:
Ultimate apple2.com **REACTIVEMICRO.COM**
UM ULTIMATE MICRO

PRODUCTION RELEASE
 This revision supersedes all previous versions. Please destroy all old copies.
 NOTICE OF PROPRIETARY PROPERTY
 The information contained herein is the proprietary property of Apple Computer, Inc. The possessor agrees to the following:
 (1) To maintain this document in confidence.
 (2) Not to reproduce or copy it.
 (3) Not to reveal or publish it, in whole or part.

ITEM	QTY	PART NUMBER	DESCRIPTION
1	1	805-0556-B	BASE, CHASSIS A2e EURO

DATE: 4/1/82
 DRAWN BY: D. COOK
 CHECKED BY: J. B. BROWN
 TITLE: BASE, CHASSIS A2e EURO
 DRAWING NUMBER: 805-0556-B
 SCALE: FULL
 SHEET 1 OF 2